




LOAN MANAGEMENT SYSTEM (LMS)

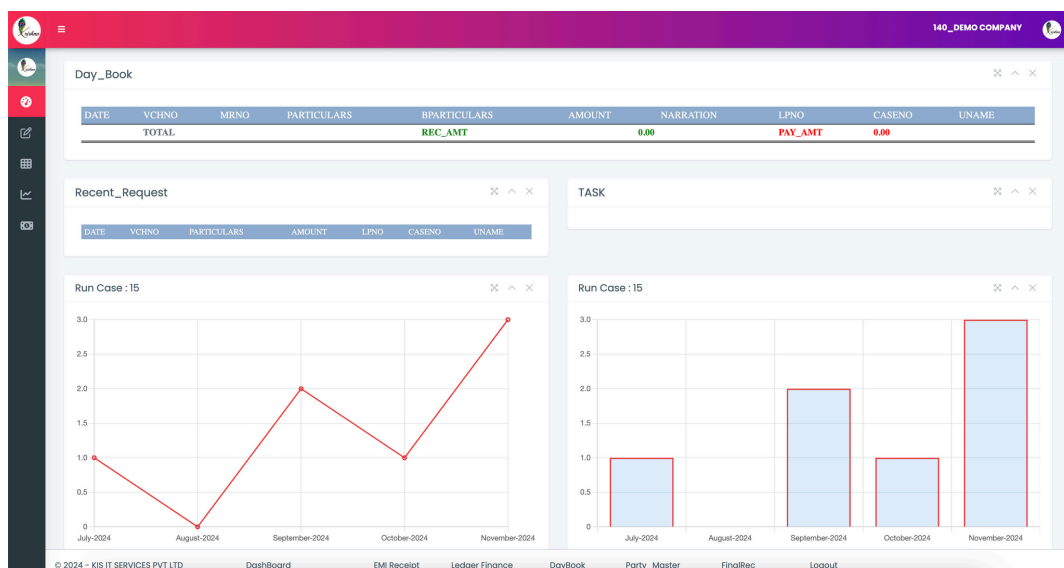
Add more power to the core of your loan management.

Achieve efficiency and scale with the Krishna Loan management system at the center of your lending operations.

 **3,000,000 +
Active Loans**


 **50 +
Loan Products**

 **Unlimited
Capability**



Special Features

- ✓ Manage your Loans Ledger.
- ✓ Defaulters list, Dealer-Wise.
- ✓ Prepayment & Closure workflows.
- ✓ E-KYC & C-KYC with physical Verification.
- ✓ Interactive charts and data analytics.
- ✓ Mobile App for on-field Collections.
- ✓ Client portal for seamless Reports.
- ✓ Extended users management security.
- ✓ Integration With Tally Accouting Software.
- ✓ Trial Balance, Balance Sheet and P&L A/C.
- ✓ E-Nach, Automated EMI Receipts.
- ✓ CIBIL, RBI reports similiar to 4B Reports
- ✓ Automated Reminders through SMS, Whatsapp & Voicecalls.

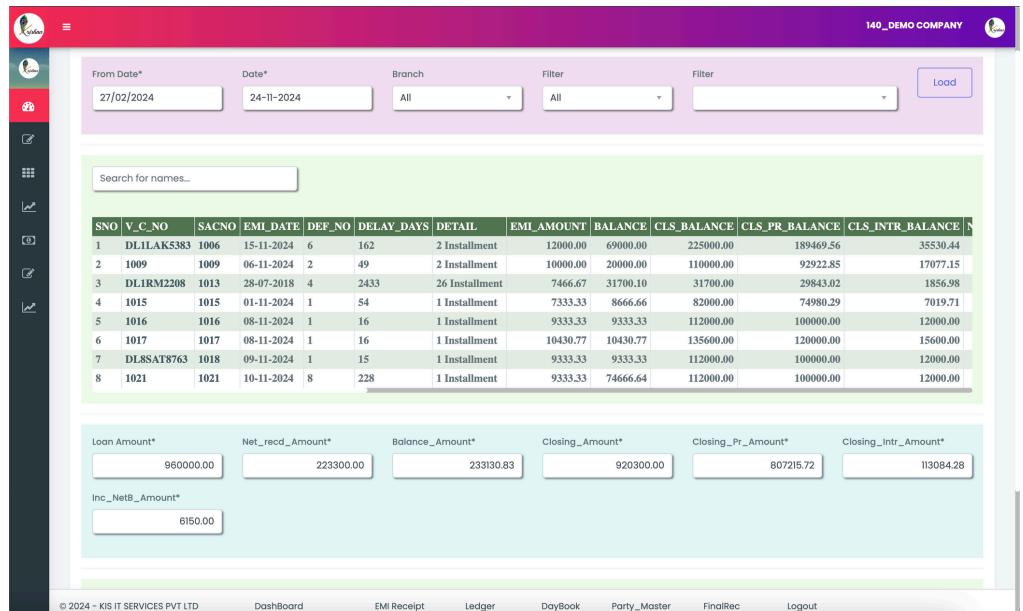
 +91-8800198868

 [kisitservices.in](https://www.kisitservices.in)

 Support@kisdeldhi.com

Business Challenges

Clients face unique challenges when it comes to software development and technology adoption because of data security, and meeting regulatory requirements like modern intergration, updating regulatory Compliance, financial reporting, interactive dashbroad for daily updates. Customs solution mainly costs higher due to bugs fixing, maintence and many more. New Innovation and updating with them is not easy for financial insutition to adapt and know more about the compliance.



SNO	V_C_NO	SACNO	EMI_DATE	DEF_NO	DELAY_DAYS	DETAIL	EMI_AMOUNT	BALANCE	CLS_BALANCE	CLS_PR_BALANCE	CLS_INTR_BALANCE
1	DL1LAK5383	1006	15-11-2024	6	162	2 Installment	12000.00	69000.00	225000.00	189469.56	35530.44
2	1009	1009	06-11-2024	2	49	2 Installment	10000.00	20000.00	110000.00	92922.85	17077.15
3	DL1RM2208	1013	28-07-2018	4	2433	26 Installment	7466.67	31700.10	31700.00	29843.02	1856.98
4	1015	1015	01-11-2024	1	54	1 Installment	7333.33	8666.66	82000.00	74980.29	7019.71
5	1016	1016	08-11-2024	1	16	1 Installment	9333.33	9333.33	112000.00	100000.00	12000.00
6	1017	1017	08-11-2024	1	16	1 Installment	10430.77	10430.77	135600.00	120000.00	15600.00
7	DL8SAT8763	1018	09-11-2024	1	15	1 Installment	9333.33	9333.33	112000.00	100000.00	12000.00
8	1021	1021	10-11-2024	8	228	1 Installment	9333.33	74666.64	112000.00	100000.00	12000.00

Loan Amount*	Net_recd_Amount*	Balance_Amount*	Closing_Amount*	Closing_Pr_Amount*	Closing_Intr_Amount*
960000.00	223300.00	233130.83	920300.00	807215.72	113084.28

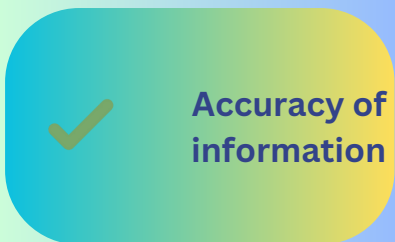
Inc_NetB_Amount*
6150.00

Our Solution

Krishna Software offers a range of solutions to address the business challenges faced by financial institutions. The key points is to provide scalable, secure, and efficient solutions that align with the specific needs of the clients with fulfilling the compliance, API-integrations, Reporting, data security with full scalability and performance optimization.

Admin Panel

- ✓ Manage particular Loans Ledgers.
- ✓ Users and roles management within a company.
- ✓ Interative Dashboard with daily updates
- ✓ Modern reporting with full scalebility
- ✓ Interactive charts and data analytics.
- ✓ Mobile App for timely updates.
- ✓ Base stations and devices management;
- ✓ Raw data filtering and export.
- ✓ Notifications system.



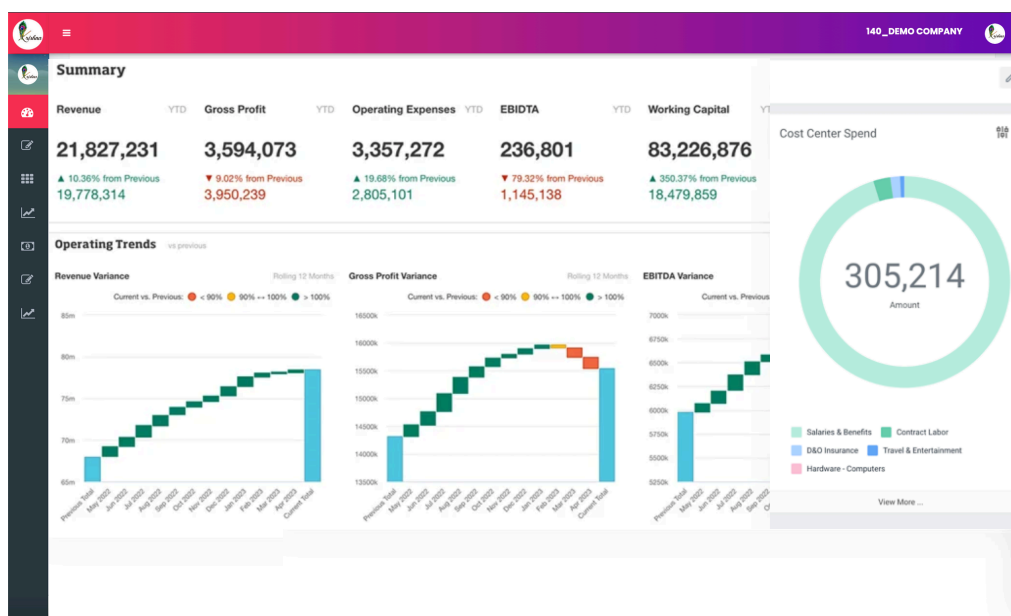
User Area

Companies owners have such distinctive features as:

- ✓ Account settings management.
- ✓ New user management.

Owners and users can do the following things in the application:

- ✓ To login/register an account
- ✓ Know about the financial institutions.
- ✓ Manage profiles and other details.
- ✓ Know about the financial institutions.
- ✓ View notifications and timely ledger reports.
- ✓ Pay EMI seamlessly without any interference.
- ✓ integrated with KYC and Physical verification anywhere.




Multi Functional Feature

Managing multiple finance branches with a us involves using a centralized platform that can efficiently handle and streamline your financial operations.

Krishna LMS serves as a unified solution to manage and monitor all aspects of finance, from accounting and budgeting to reporting and compliance, for multiple branches or subsidiaries of a business or organization.

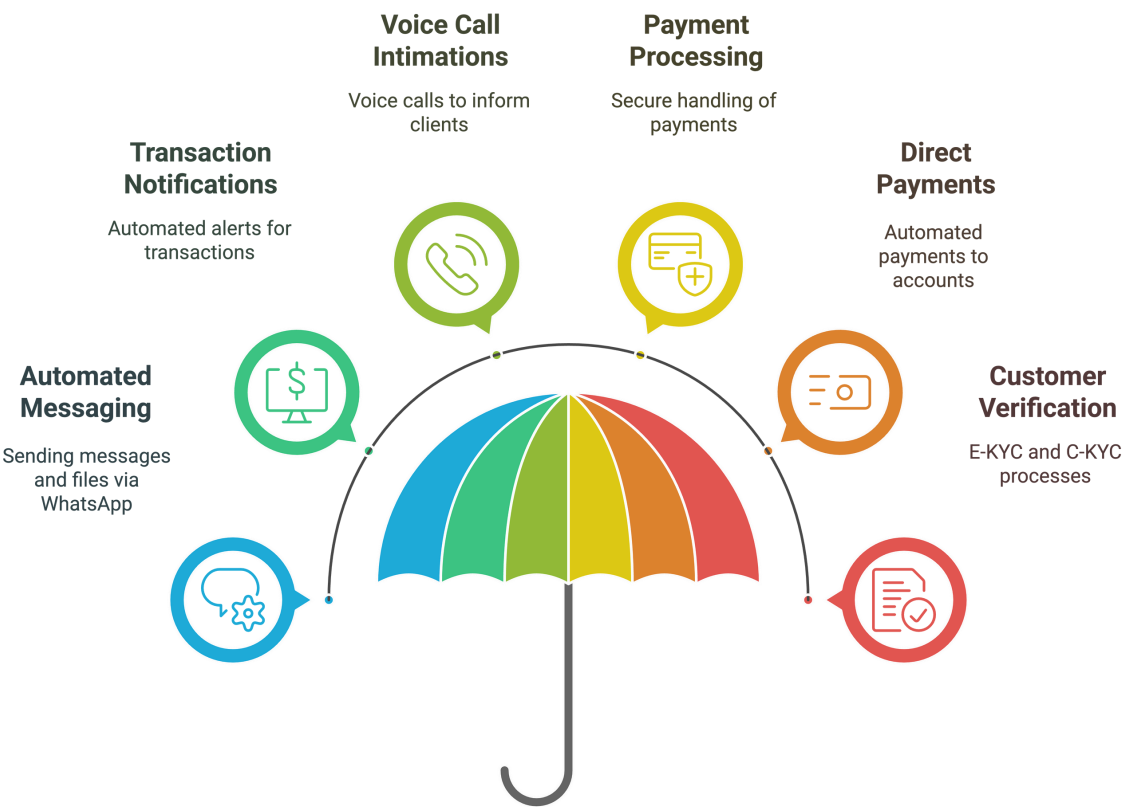
APIs that put your business on growth.

Extend the functionalities of our LMS by opening up our extensive APIs, integrate with mobiles apps, customer portals or any interface. Our core is extensible - simple integrations to make your business grow.

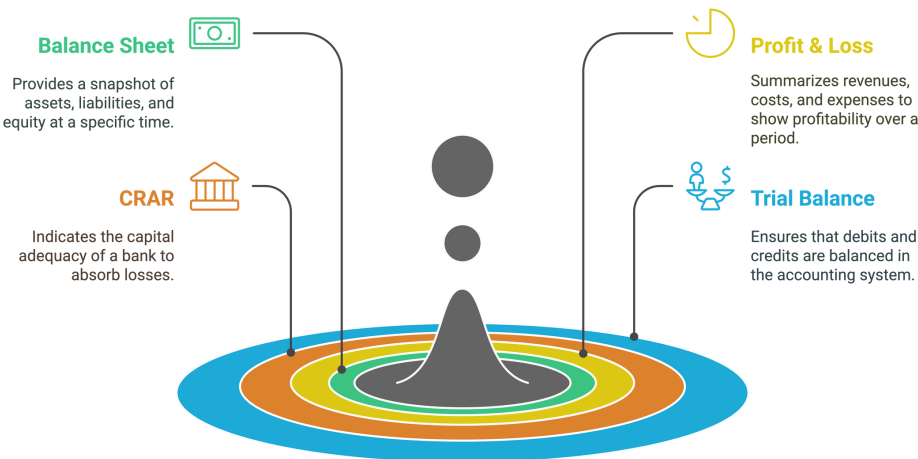


360 view of your portfolio

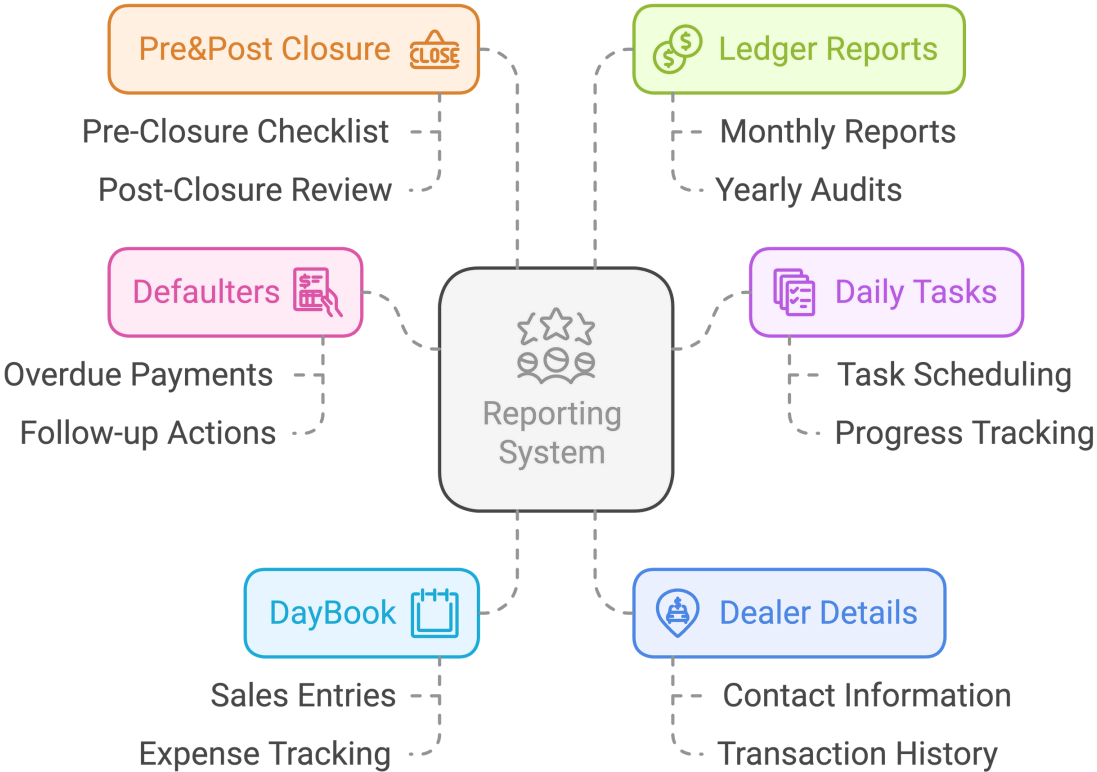
Comprehensive Communication and Payment Solutions



Financial Reporting Outcomes



Reporting System Structure and Components



Seamless Operations

Comprehensive Framework for Financial Reporting and Analysis





A UNIT OF KIS IT SERVICES PVT. LTD.

Know more



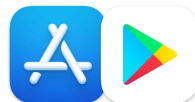
+91-8800198868
011-41602254



Kisitsservices.in



Support@kidelhi.com



App Available

MORE PRODUCTS



Staff Manager



COMING SOON IN 2025